



Company : Beach Petroleum

Well : Spikey Beach-1

Interval : 75.00 - 2052.43 meters

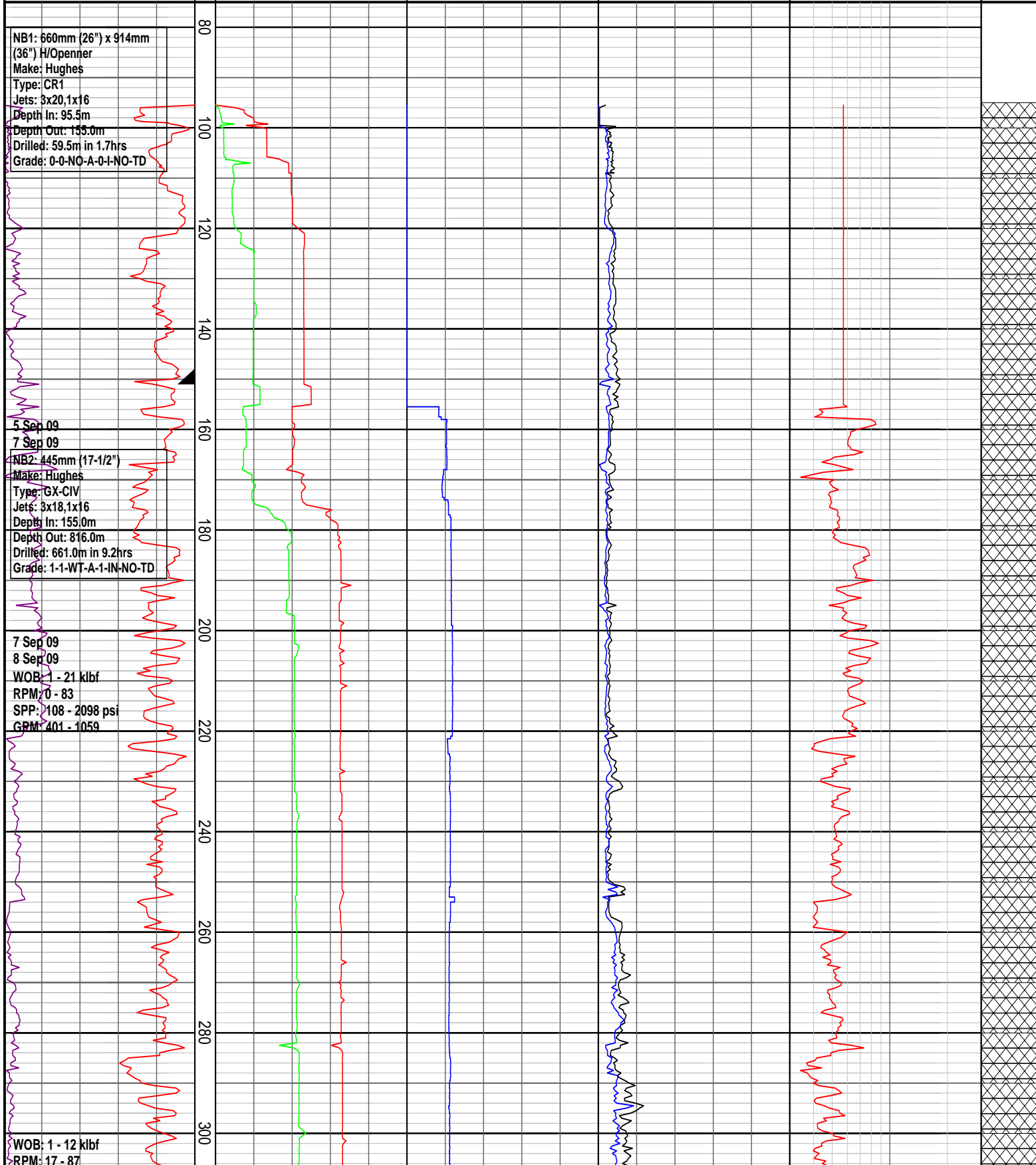
Created : 13/Sep/2009 5:58:04 AM



INTEQ

DRILLING DATA PLOT

WOB Avg (klbf) 10 20 30 40 50	FLOW IN (gpm) 300 600 900 1200 1500	RPM Avg 70 140 210 280 350	TORQUE Max (kft.lb) 8 16 24 32 40	DXC 0.3	3	INTERPRETED LITHOLOGY
ROP (m/hr) 300 240 180 120 60	STANDPIPE (psi) 1000 2000 3000 4000 5000		TORQUE Avg (kft.lb) 8 16 24 32 40			
MD meters 1:1000						



SPP: 1822 - 2900 psi

GPM: 908 - 1027

WOB: 1 - 9 klbf

RPM: 74 - 112

SPP: 1822 - 2900 psi

GPM: 895 - 1148

WOB: 1 - 16 klbf

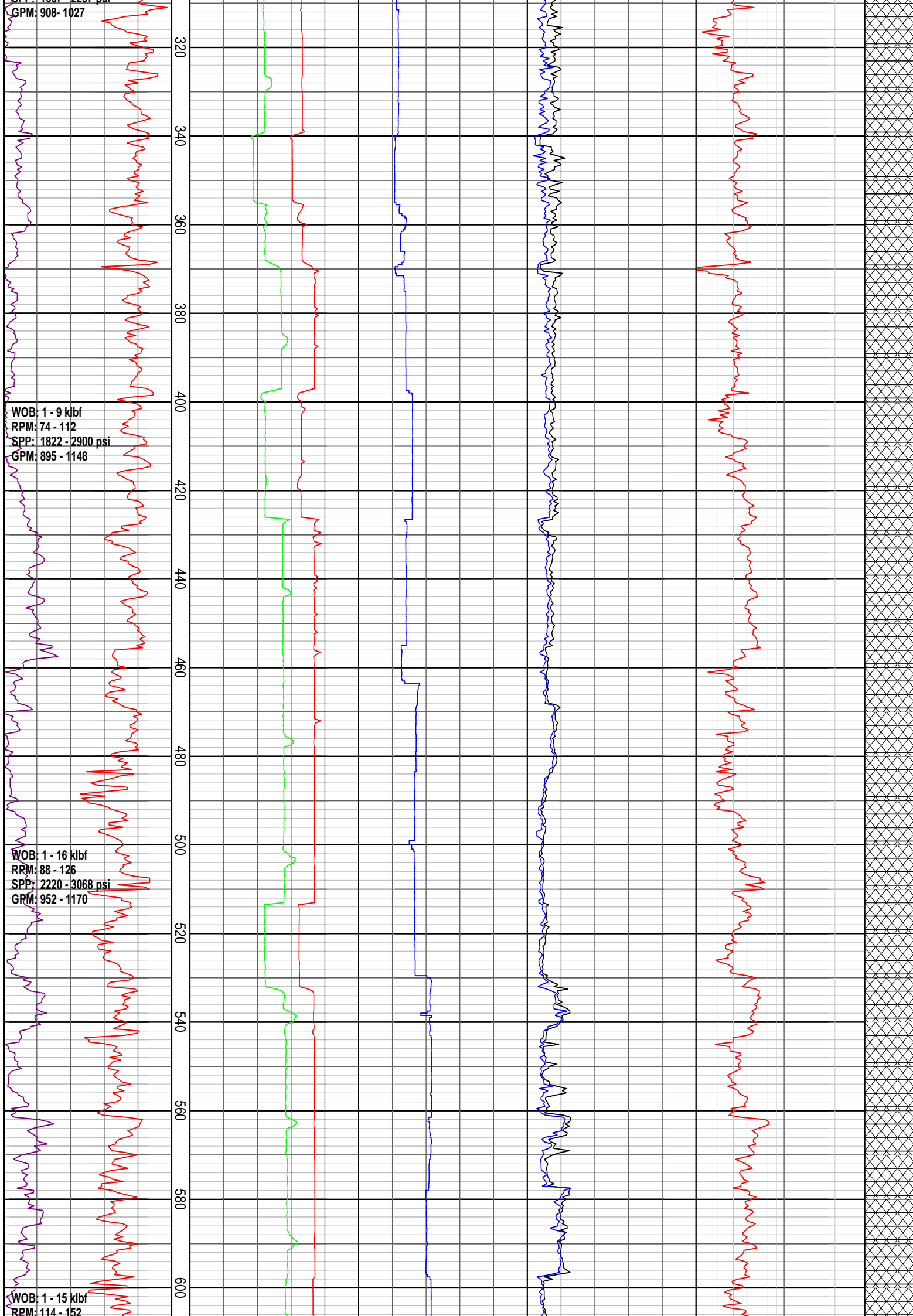
RPM: 88 - 126

SPP: 2220 - 3068 psi

GPM: 952 - 1170

WOB: 1 - 15 klbf

RPM: 114 - 152



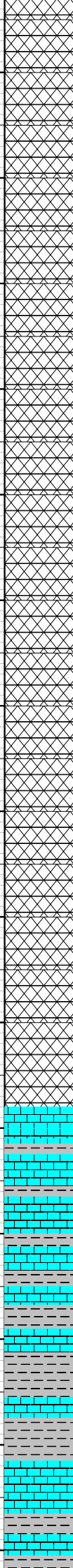
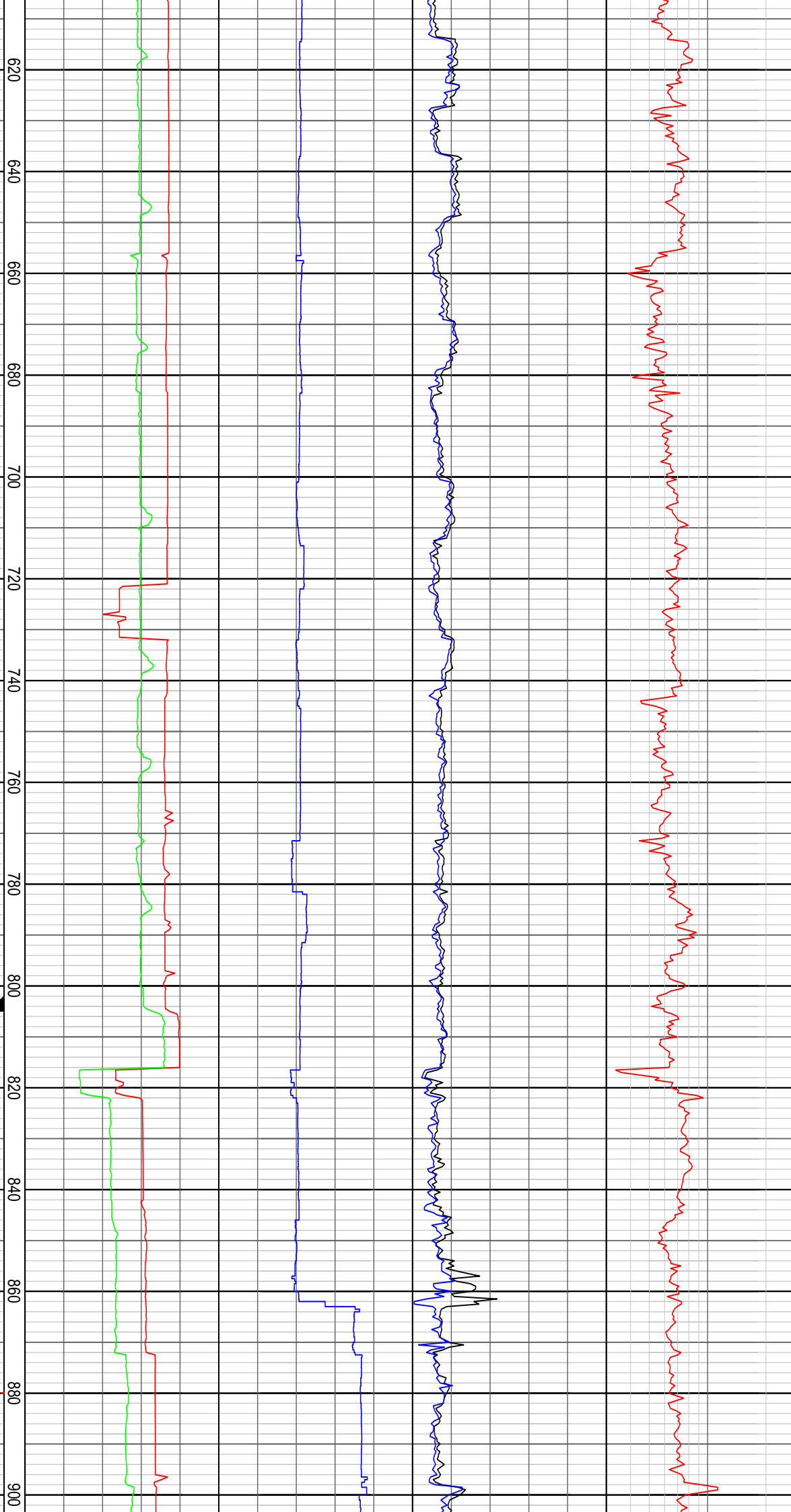
SPP: 2192 - 3165 psi
GPM: 965 - 1112

WOB: 1 - 16 klbf
RPM: 96 - 153
SPP: 2722 - 3258 psi
GPM: 1058 - 1115

WOB: 2 - 26 klbf
RPM: 131 - 160
SPP: 2859 - 3319 psi
GPM: 606 - 1160
08 Sep 09
11 Sep 09

NB3: 311mm (12 1/4")
Make: Hughes
Type: HMC506ZX
Jets: 6x15
Depth In: 816.0m
Depth Out: xxxxm
Drilled: xxxm in xxhrs
Grade: xxxxxx

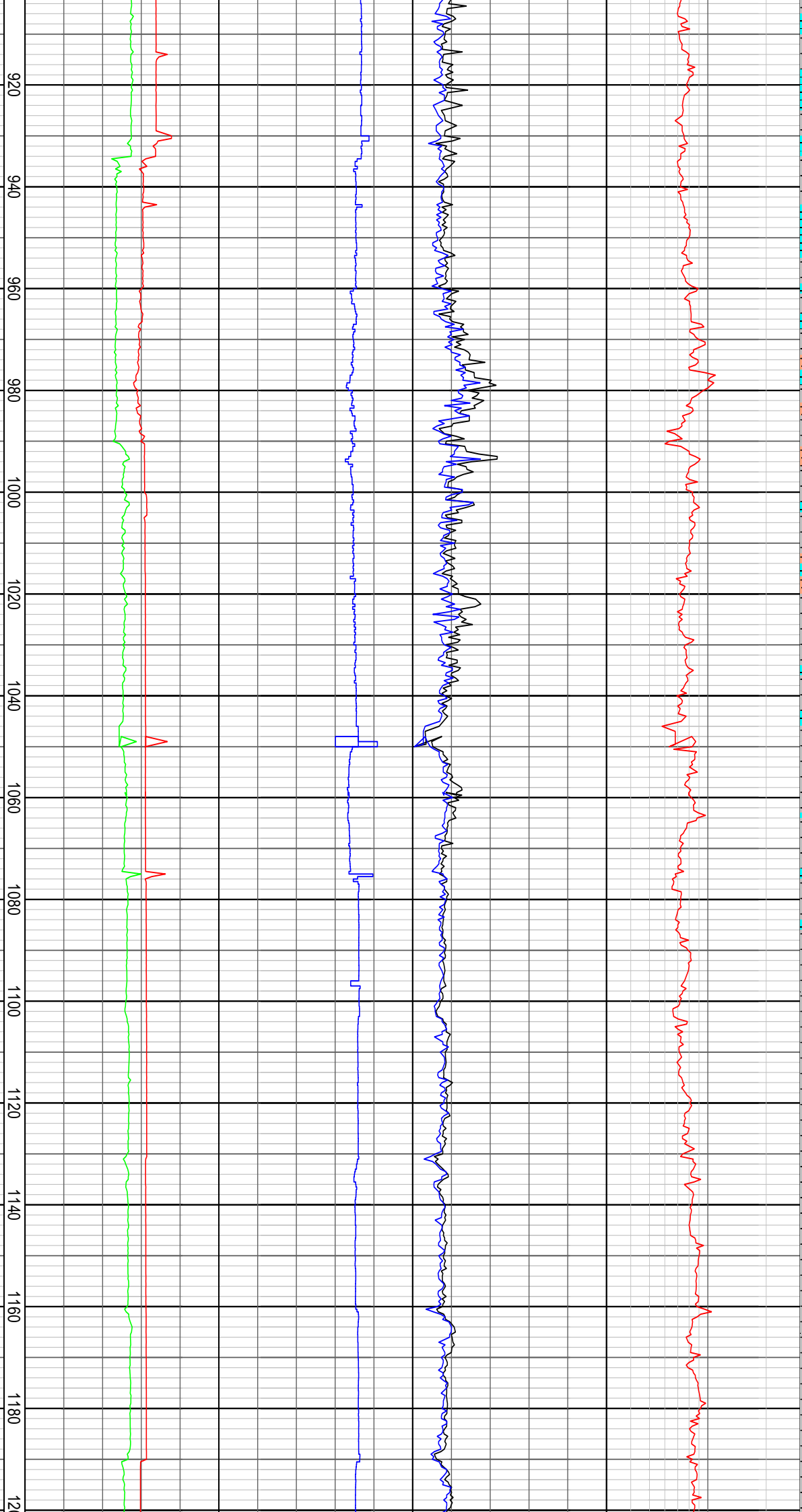
WOB: 1 - 27 klbf



RPM: 129 - 269
SPP: 1395 - 3611 psi
GPM: 699 - 1197

WOB: 2 - 32 klb
RPM: 228 - 271
SPP: 2234 - 2798 psi
GPM: 840 - 1134

WOB: 3 - 31 klb
RPM: 210 - 286
SPP: 2428 - 2993 psi
GPM: 921 - 1100

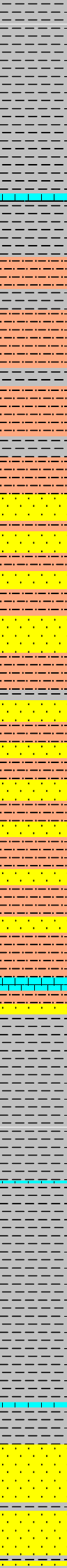
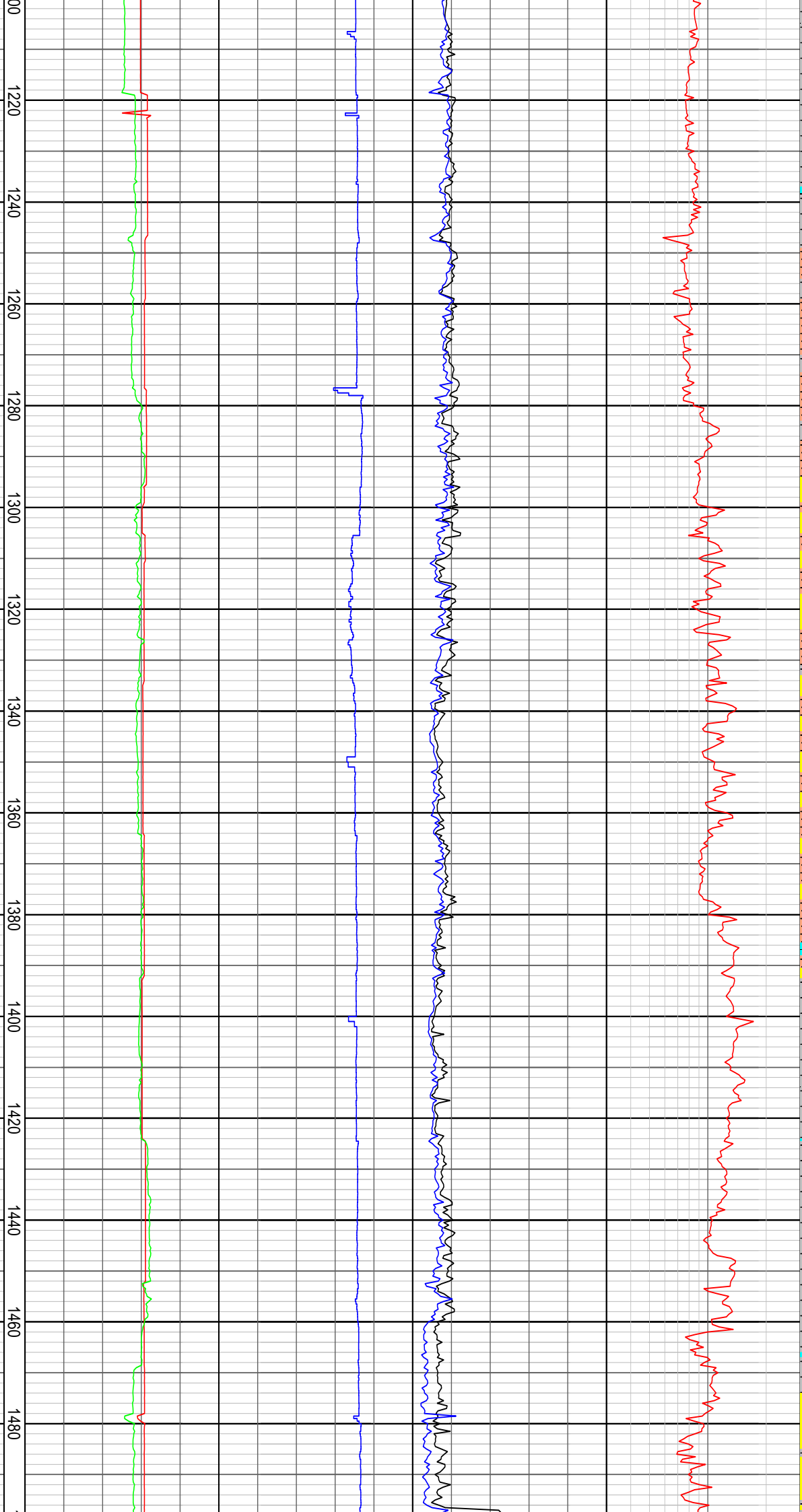


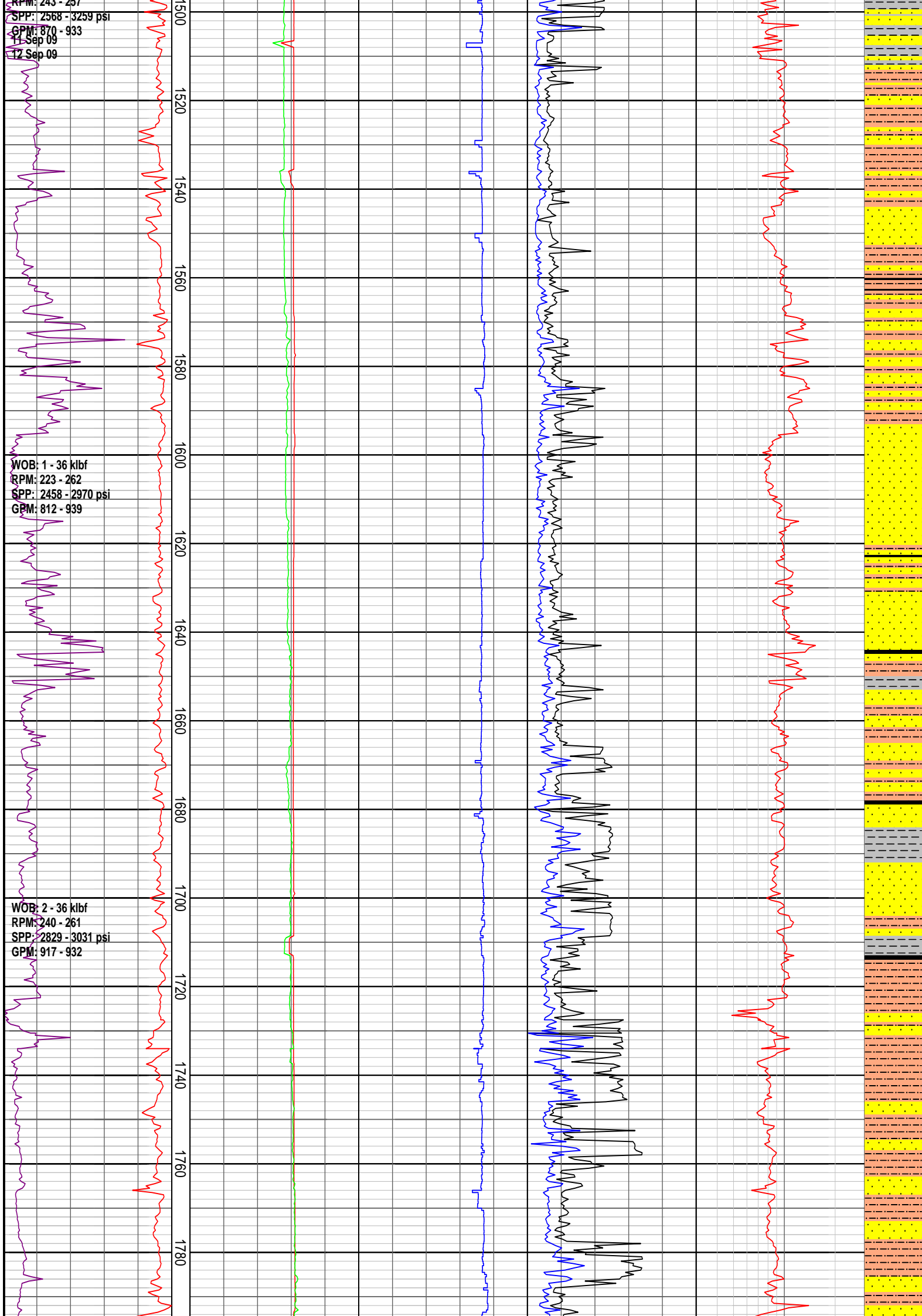
WOB: 5 - 30 kbf
RPM: 244 - 255
SPP: 2489 - 2761 psi
GPM: 892 - 942

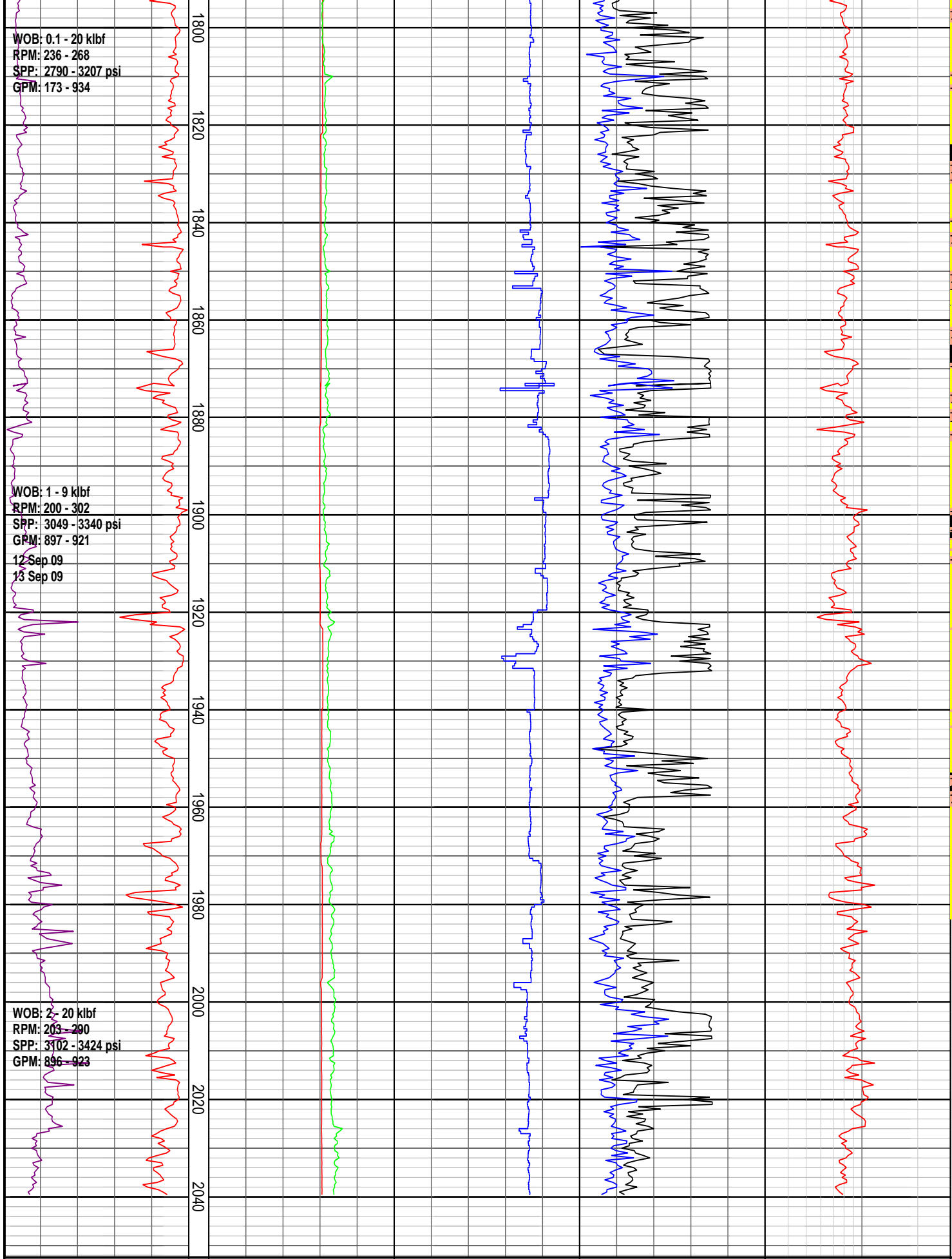
WOB: 4 - 29 kbf
RPM: 207 - 260
SPP: 2500 - 3103 psi
GPM: 754 - 973

WOB: 3 - 30 kbf
RPM: 231 - 255
SPP: 2817 - 3069 psi
GPM: 904 - 931

WOB: 1 - 37 kbf
RPM: 242 - 257







DRILLING DATA PLOT

<p>WOB Avg (klbf)</p> <p>10 20 30 40 50</p> <p>ROP (m/hr)</p> <p>300 240 180 120 60</p>	<p>FLOW IN (gpm)</p> <p>300 600 900 1200 1500</p> <p>STANDPIPE (psi)</p> <p>1000 2000 3000 4000 5000</p>	<p>RPM Avg</p> <p>70 140 210 280 350</p>	<p>TORQUE Max (kft.lb)</p> <p>8 16 24 32 40</p> <p>TORQUE Avg (kft.lb)</p> <p>8 16 24 32 40</p>	<p>DXC</p> <p>0.3 3</p>	<p>INTERPRETED LITHOLOGY</p>
---	--	---	---	----------------------------------	----------------------------------

MD meters 1:1000